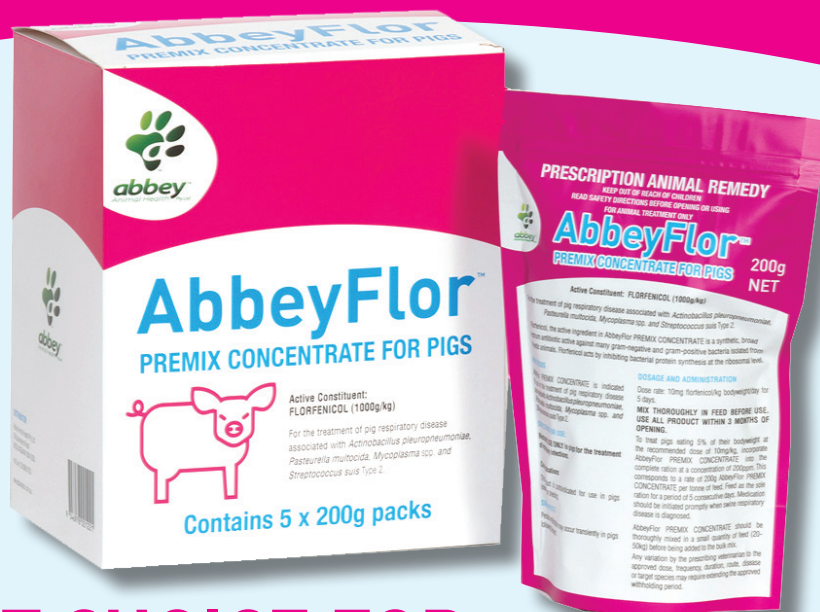


AbbeyFlor™

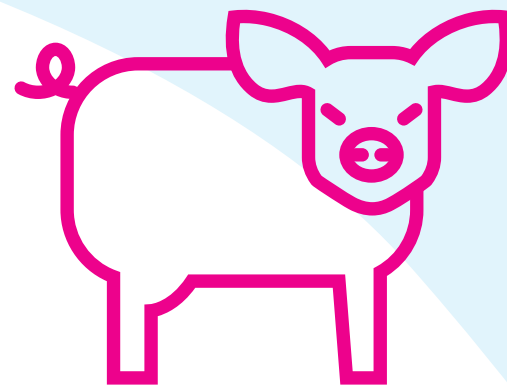
PREMIX CONCENTRATE FOR PIGS



THE SMART CHOICE FOR DISEASE CONTROL IN PIGS

AbbeFlor Premix Concentrate

- Contains the active Florfenicol
- Indicated for the treatment of Respiratory Disease associated with AP, *Pasteurella multocida*, *Mycoplasma spp*, & *Streptococcus suis Type 2*
- Premix Concentrate
- Comes in 200g & 1kg Re-Sealable Sachets



	AbbeyFlor™ Premix Concentrate	Nuflor™ Pig Premix
Florfenicol/kg	1000g	40g
Dose Rate	10mg/kg for 5 days	10mg/kg for 5 days
Withholding Period: MEAT	12 days	12 days
Export Slaughter Interval: (ESI)	15 days	15 days

Nuflor™ is a registered trademark of Intervet International B.V.
AbbeyFlor™ is a trademark of Abbey Laboratories Pty Ltd

AbbeyFlor™ PREMIX CONCENTRATE FOR PIGS

ACTIVE CONSTITUENTS: FLORFENICOL (1000g/kg)

For the treatment of pig respiratory disease associated with *Actinobacillus pleuropneumoniae*, *Pasteurella multocida*, *Mycoplasma spp.* and *Streptococcus suis* Type 2.

Florfenicol, the active ingredient in ABBEYFLOR PREMIX CONCENTRATE is a synthetic, broad spectrum antibiotic active against many gram-negative and gram-positive bacteria isolated from domestic animals. Florfenicol acts by inhibiting bacterial protein synthesis at the ribosomal level.

INDICATIONS

AbbeyFlor PREMIX CONCENTRATE is indicated for use in the treatment of pig respiratory disease associated with *Actinobacillus pleuropneumoniae*, *Pasteurella multocida*, *Mycoplasma spp.* and *Streptococcus suis* Type 2.

DIRECTIONS FOR USE:

Restraints: USE ONLY in pigs for the treatment of respiratory infections.

Contraindications

This product is contraindicated for use in pigs intended for breeding.

Any variation by the prescribing veterinarian to the approved dose, frequency, duration, route, disease or target species may require extending the approved withholding period.

SIDE EFFECTS

Perianal inflammation may occur transiently in pigs following treatment.

DOSAGE AND ADMINISTRATION

Dose rate: 10mg florfenicol/kg bodyweight/day for 5 days.

MIX THOROUGHLY IN FEED BEFORE USE. USE ALL PRODUCT WITHIN 3 MONTHS OF OPENING.

To treat pigs eating 5% of their bodyweight at the recommended dose of 10mg/kg, incorporate ABBEYFLOR PREMIX CONCENTRATE into the complete ration at a concentration of 200ppm. This corresponds to a rate of 200g ABBEYFLOR PREMIX CONCENTRATE per tonne of feed. Feed as the sole ration for a period of 5 consecutive days. Medication should be initiated promptly when swine respiratory disease is diagnosed.

ABBEYFLOR PREMIX CONCENTRATE should be thoroughly mixed in a small quantity of feed (20-50kg) before being added to the bulk mix.

WITHHOLDING PERIOD

MEAT: REMOVE ALL MEDICATED FEED 12 days before slaughter for human consumption.

TRADE ADVICE:

EXPORT SLAUGHTER INTERVAL (ESI): DO NOT USE less than 15 days before slaughter for export. Before using this product, confirm the current ESI from Abbey Animal Health Pty Ltd on 02 8088 0720 or the APVMA website (www.apvma.gov.au/residues).

FIRST AID

If poisoning occurs, contact a doctor or Poisons Information Centre: Phone Australia 131 126.

Additional information is in the safety data sheet. For further information contact Abbey Animal Health Pty Ltd on 02 8088 0720.

ADDITIONAL USER SAFETY:

Will irritate the eyes. Avoid contact with eyes. When opening the container and preparing the product for use, wear goggles. If product in eyes, wash it out immediately with water. Wash hands after use. After each day's use wash goggles.

DISPOSAL

Shake and empty contents into medicated feed. Do not dispose of undiluted chemicals on site. Puncture or shred and bury empty bag in a local authority landfill. If no landfill is available, bury the bag below 500mm in a disposal pit specifically marked and set up for this purpose clear of waterways, vegetation and roots. Empty bag and left-over product should not be burned.

STORAGE

Store below 25°C (Air conditioning).

AbbeyFlor™ is a trade mark of Abbey Laboratories Pty Ltd

APVMA Approval No. 81128/102394